

## **WELCOME TO BOVINGDON NEWS**

What a very strange year this has been so far... for all of us, and it's had its ups and downs — not being able to see Josh since March has to be the biggest down: we talk to him on FaceTime but it's not easy, as he doesn't understand nor is he able to see the screen very well but it is better than nothing. And I know I'm not the only one unable to see family and loved ones in person, so my heart goes out to anybody in the village in a similar situation... I know exactly how you feel.



On a more positive note, at the beginning of Lockdown I volunteered to be an NHS Responder, which has meant making phone calls, checking up on people to see if they need any help, delivering prescriptions and groceries... anything, really, that has helped people who are shielding. The one thing that COVID-19 has taught me is that we are all in this together and the more we can do for each other, the better we will all be... so check up on your neighbours, smile at the person walking by you in the street, support our local shops and businesses (following all official social distancing guidelines, of course), and this whole weird time will, eventually, be something we can look back on.

Stay safe, everybody... and here's to 2021!

*Steph Farrer*

*Editor, Bovingdon News*

*07913 086477 / [steph@farrspark.co.uk](mailto:steph@farrspark.co.uk)*

---

### **Copy for the Next Edition of Bovingdon News**

We welcome articles from any residents of the village — without your support the Bovingdon News would not be the interesting read it currently is! Any articles must be submitted by March 7<sup>th</sup> either by email (to [steph@farrspark.co.uk](mailto:steph@farrspark.co.uk)) or post (to the Parish Clerk's office). For advertisers, payments and any changes to advertisements should be submitted by February 28<sup>th</sup> (BACS is preferable but if payment by cheque it should be made payable to Bovingdon Parish Council) to the Parish Clerk's office. Adverts may be supplied as complete files (preferably PDFs, black and white only) or can be created in-house (all b/w images and text to be supplied with a hard copy please). Please note, however, to avoid repetition within editorial copy the area code 01442 has been omitted from some local phone numbers.

### **Opinions**

It should be noted that neither the Editor nor the Parish Council can accept responsibility or be held liable for any errors or claims made by the advertisers nor do they necessarily agree with the views expressed by the contributors.

### **Thanks**

The Parish Council wish to thank all persons involved in producing, supporting and delivering the Bovingdon News.

**Bovingdon News is designed and edited by Steph Farrer, Farrspark Ltd**  
**[www.farrspark.co.uk](http://www.farrspark.co.uk) • [steph@farrspark.co.uk](mailto:steph@farrspark.co.uk) • 07913 086477**

Printed by Public Sector Prison Industries

## **Miscellaneous**

### **Memorial Hall Toilets**

Due to the current situation, the public toilets will remain closed for the foreseeable future. Please refer to our website and Facebook page for any updates regarding the re-opening of the toilets. The toilet for disabled users remains open as usual, and is accessed using a RADAR key.

### **Scoop the Poop!**

Bovingdon Parish Council supply dog poop bags to villagers at a cost of 50p/pack. Due to the current situation, the Parish Office remains closed so a big thank you to Jarman who have kindly agreed to sell them on our behalf. Once the Parish Office re-opens bags can be collected from there as normal. We will update our website and Facebook page once the office re-opens. Thank you for cleaning up after your dog.

### **Saturday Parking**

Did you know that parking is available on Saturdays in the High Street at the rear of Batemans Solicitors and also in the School car park (from 8:30-18:30)?

---

## **Bovingdon Parish Council/Committee Meetings**

The council meetings, both Parish Council and Committee, are still happening but are being held remotely via video conference (Zoom). Members of the public are welcome to join these meetings; dates of each meeting are in the Village Diary, and a full agenda and details of how to join each meeting are listed on the parish website. You will be asked to identify yourself before being allowed to join the video call; however, please note, if this information is withheld you will not be able to take part.



We look forward to welcoming you to our meetings.

*Mike Kember, 833036*

*[www.bovingdonparishcouncil.gov.uk](http://www.bovingdonparishcouncil.gov.uk)*

---

## **Volunteering In Your Local Community**

Although the Volunteer Centre is not yet open to the public, we are still helping local voluntary organisations find the volunteers they need, and we have lots of new and interesting volunteering roles available throughout Dacorum. Could you spare an evening a week to volunteer with the Scouts or Guides? Do you have experience of fund-raising and finance — if so you could be a Trustee for a local charity? We are also looking for people to volunteer as a baker, driver, befriender, and support worker as well as gardener, face-mask sewer, and counsellor. For more information about any of these roles, or for a copy of our latest newsletter, which has details of all our current volunteering opportunities, please contact the Volunteer Centre.



*247209 / [volunteering@communityactiondacorum.org.uk](mailto:volunteering@communityactiondacorum.org.uk)*

*2 Bovingdon News November 2020*



As part of our on-going commitment to the community, Leon Catering, in conjunction with our sister company Rossco, are offering home-delivered fruit and vegetables along with high-quality chef ready-made meals.

For as little as £10 per order, we will deliver to your door.

Please visit: **www.rossco.shop** or call **01923 249799**

*We are here to help*



Travel Agency established for over 20 years based in Bovingdon

01442 737847

sales@tailormadeholidays.co.uk

African Specialists

World-wide Destinations

Honeymoon ~ Family Holidays

Exclusive Safaris ~ Golfing Holidays



# **Bovingdon**



# **Connect**

## The new identity for **Bovingdon Care**

Bovingdon Care has been re-branded as **Bovingdon Connect** to emphasise the service that we wish to provide and avoid confusion with any organisations providing personal or domestic care services. There will be no change in the service that we offer, which is to make volunteer-driver transport available to Bovingdon residents who have essential appointments at hospitals, clinics, surgeries and other facilities that they cannot easily reach by public transport. Although the original name will inevitably be used informally for some time and our publicity material is being updated gradually, the new name, **Bovingdon Connect**, is effective from now on.

Access to the service remains  
message to 07376 832999

**1<sup>st</sup> September – Service remains suspended**  
**due to Covid-19 restrictions.**  
**Please use 07376 832999 to call or send a text message**  
**to find out whether we are operational again or you**  
**would like to be informed when we are about to re-start.**

When we re-start our service, we trust that users will want to make a voluntary donation towards their driver's expenses and the costs of providing the service. Any direct costs for the journey, such as parking charges, should be paid by the user. Remember to bring your "blue badge" if you have one.

Our service is available on the basis that we are giving a lift to a friend or neighbour. Our drivers cannot be expected to be responsible for the passenger's physical or mental health, other than their normal duty of care to anyone travelling with them, although they will usually go beyond that. Anyone in need of a carer for everyday life should be accompanied by a carer when being transported by Bovingdon Connect.



## **Contents**

### **Village News**

Baptist Church.....	42, 44
Bovingdon Connect (was Bovingdon Care).....	4, 26
Bovingdon News — Next Issue.....	1
Chairman's Report.....	6
County Report.....	12
Editor's Welcome.....	1
Friends of St Lawrence.....	18
Hatch, Match & Dispatch.....	56
Library Opening Times.....	IBC
Memorial Hall.....	19
Miscellaneous.....	2
Neighbourhood Plan.....	20
Neighbourhood Watch — News & Update.....	52
Parish Council and Elected Representatives.....	IFC/IBC
Parish Council: Office Hours.....	OBC
Planning Report.....	8, 10
Primary Academy.....	58
Regular Events.....	31, 33
St Lawrence Church.....	16, 50
Trade Directory.....	30
Useful Contacts.....	32
Village Diary.....	29
Village Directory.....	28
Village Market.....	38

### **Clubs/Activities**

Bowls.....	34
Brownies.....	36
Cricket.....	18
Cubs and Scouts.....	22
Evening WI.....	48
Evergreens.....	34
Hatha Yoga.....	48
History Group.....	54, 56
Horticultural Society.....	14
Ladybirds.....	24
Players.....	36
Rainbows.....	10
Tennis.....	40

### **Features**

Bovingdon Christmas Lights.....	46-47
Bovingdon Parish Council and Committee Meetings.....	2
CAD Volunteer Centre.....	2
Community Library Update.....	44
Herts Hearing Advisory Service.....	52

## **Chairman's Report**

It seems a long time ago since I last wrote a report for the Bovingdon News and clearly a lot has changed for all of us during that time.



The Parish Office has been closed since 23<sup>rd</sup> March. Mike Kember, the Parish Clerk, and Lisa have been working from home since then and all calls to the Parish Office are being diverted to their personal telephones. The Memorial Hall has been closed since the same date, except for use by Bovingdon Pre-School, who remained open for the children of key workers and the NHS Blood Transfusion Service.

I am pleased to report that from 1<sup>st</sup> September the Memorial Hall has re-opened for regular users only; however it is being operated under strict guidelines in order to meet Government requirements on the prevention of the spread of COVID-19. However, with renewed current Government guidance for workers to work from home if possible, the Parish Office will remain closed for the foreseeable future. As the Parish Office remains closed, we have been in contact with Jarman's who have kindly agreed to take a stock of dog waste bags and they are available at 50p a pack.

Since 23<sup>rd</sup> March, all Council and Committee Meetings have taken place virtually via video-conferencing. Meeting dates are published on the Parish Council web site and remain open to the public. If anyone wishes to join a meeting they should look at the agenda posted on our website and use the login details shown at the end of the agenda. When you join the meeting you will be asked to identify yourself. If this information is withheld then you will not be able to take part.

In respect of future events, unfortunately there is not much to relate, however I can confirm that the Bovingdon Parish 10k run is now scheduled to take place on 5<sup>th</sup> September 2021. The Council has reluctantly decided not to hold the annual Christmas lights switch-on event this year. I can, however, confirm that we will have Christmas lights in the High Street and that they will be switched on from Sunday 29th November.

Please see my separate planning report, this gives details of the draft local plan that has been published by the Borough Council, which is expected to go out for public consultation sometime in November or December.

On behalf of all members of the Parish Council, we hope that you and your families remain safe and well and that you all have an enjoyable Christmas. Let's hope and pray that life will return to normal for us all in 2021.

*Councillor Graham Barrett  
Chairman, Bovingdon Parish Council*

# Executive Travel by MRH

Airports – Cruise Terminals – City theatre or restaurant trips  
Fully Licensed Dacorum Chauffeur



For bookings, quotes or just some advice call Mark on  
**01442 500 750 – 07973 470202 – [mark@m-r-h.co.uk](mailto:mark@m-r-h.co.uk)**  
Accounts and card payments welcome

*Farrspark Ltd*

Tailored business services for all

**Page Design (Ads, Flyers, Magazines, Books)**  
**Website Design • Digital Transcription**

**Steph Farrer**

31 Austins Mead, Bovingdon, Herts. HP3 0JU  
**07913 086477 • [steph@farrspark.co.uk](mailto:steph@farrspark.co.uk)**  
[www.farrspark.co.uk](http://www.farrspark.co.uk)

## **Planning Committee Report**

### **Dacorum Local Plan (2020–2038) Emerging Strategy for Growth (for consultation)**



Some of you may have already seen the draft proposals for the provision of new housing in the village as part of the Borough's emerging strategy for growth for the period 2020–2038, which have been published on the Borough Council's website.

Dacorum Borough Council is preparing a new Local Plan for the period 2020 to 2038. Once adopted, it will replace the Site Allocations Development Plan Document (adopted July 2017), the Core Strategy Development Plan Document (adopted September 2013) and those "saved" parts of the Dacorum Borough Local Plan (adopted May 2004). The Local Plan is being prepared in accordance with the Council's Local Development Scheme (LDS) (adopted July 2020).

The Bovingdon Delivery Strategy, which can be found on pages 256-261 of the draft plan, states that at least 240 homes will be provided over the period 2020-2038. The compact and built-up nature of Bovingdon limits opportunities for development on previously developed land in the settlement area. It also states that there is scope for some further redevelopment opportunities on the High Street and on the former Bobsleigh Hotel to the north east of the village. Included in the current allocation is land already allocated under the old plan for 40 homes on the site adjacent to Chesham Road/Molyneaux Avenue.

However the majority of the growth is to be accommodated through 'a sustainable urban extension of 150 homes' on a greenfield site on the village edge i.e. land at Grange Farm, Green Lane (corner of Leyhill Road/Green Lane). The Borough Council has decided at this time against additional development on land south of Homefield, land rear of Green Lane/Louise Walk and land at Duckhall Farm, Newhouse Road, and on other sites that had been promoted by various land owners in and around the Village.

The Parish Council responded in depth to the Dacorum Issues and Options Consultation in December 2017, which at the time listed four sites that had been put forward by landowners for consideration for development. Since 2017, the Borough Council has also invited people to put forward other sites in the borough for consideration for development and several other sites in the village have been identified but not consulted on.

A number of meetings between your local Borough Councillors and Dacorum Council officers have taken place over recent months in order to reinforce the view that Bovingdon would be unable to cope with large scale development. We are therefore pleased to note that currently the proposals for Bovingdon are very much reduced.

If all the sites that had been put forward for development had been allowed, the Parish Council estimates that the village would have been facing an increase of 800-1,000 new homes.

# J C Cooke Electrical Services

- Part 'P' qualified and C&G 18<sup>th</sup> Ed qualified
- NICEIC registered Domestic Installer (Reg No. D603804)
- All types of domestic electrical work carried out
- Free estimates and quotes
- No call out charge
- Reasonable rates
- Full Public Liability Insurance



**Call 07905 356895 (mobile) or 832153 (evenings)**

**Email: [cactusjuliancooke@gmail.com](mailto:cactusjuliancooke@gmail.com)**

## LOCKERS PARK

*'The school has an energy for life and learning.'* Independent Schools Inspectorate



**Excellent academic record  
and pastoral care**

**Free wraparound care  
(7.30am-7.30pm) including  
breakfast and supper**

**Open Mornings in March,  
May and October or book a  
personal appointment via  
[lockerspark.herts.sch.uk/  
admissions](http://lockerspark.herts.sch.uk/admissions)**

**Preparatory School, Day & Boarding For Boys (7-13 Years)**

**Pre-Preparatory School, Co-Educational (4-7 Years)**

**Boxmoor, Hemel Hempstead**

## **Planning Committee Report** (cont'd)

The Parish Council has always been protective of the Green Belt and regrets any proposal that seek to remove land from the Green Belt for development. However it would be unrealistic to expect the Village not to bear some of the governments requirements for new homes and in principal we support the Borough's proposals, which are in line with the suggestions for growth in the other large villages in the Borough, namely, Kings Langley and Markyate. The additional development will provide funding towards improvements to infrastructure within the Village. Currently the level of financial contribution that would go directly to the Village will be increased by 60% if we have an adopted Neighbourhood Plan in place prior to the commencement of any additional development.

These proposals are currently in draft form and have yet to be ratified by the full Dacorum Borough Council before going out for consultation. We understand that consultation process will commence in November, and will run for eight weeks. Needless to say we will keep residents informed and up to date on this vitally important document.

*Councillor Graham Barrett  
Chairman, Planning Committee*

---

### **1<sup>st</sup> Bovingdon Rainbows**

This is a strange time for us all...

Although Rainbows have not been meeting face-to-face, we have been keeping busy. All Rainbows were delivered a large envelope of activities, from games, to bug hunts, to colouring, badge work and much more during the first stage of Lockdown, and more activities and badge challenges followed, including Postcard Exchanges.



Three new Rainbows joined the unit via post, and we are looking forward to seeing them when we meet again.

Girlguiding have been working hard keeping leaders informed about meeting face-to-face again; presently we are able to start meeting outside, so we are keeping fingers crossed for a warm September.

If you are interested in registering your daughter for Rainbows, Brownies, Guides or Rangers take a look at the Girlguiding website and register their details. Rainbows (Rainbows is part of the Girlguiding movement for girls aged 5—7 years) meet every Tuesday at Bovingdon Baptist Church 4:30—5:30pm during term time.

*Karen Dance (Red Squirrel), 1st Bovingdon Rainbows Leader  
kdance66@gmail.com / [www.girlguiding.org.uk](http://www.girlguiding.org.uk)*



## Montessori Childminder for Ages 2-5 yrs

Bovingdon

**Ofsted Registered Qualified Teacher**

**Fully Equipped Home Based Montessori Nursery Setting**

**First Aid and DBS Certified**

**Full and Part Time Spaces**

**07955 691721**

**[www.montessoriathome.info](http://www.montessoriathome.info) | [angie.demink@gmail.com](mailto:angie.demink@gmail.com)**



### **Small family run business offering a personal service**

Free Estimates, Insurance and Accident Repairs to all makes of cars, Classic Car Restoration,  
Servicing & Mechanical Repairs, Courtesy cars available

**01442 834634**

Units 11 & 12 Hatton House, Flaunden Lane, Flaunden, Nr. Bovingdon HP3 0PL

**[www.bowron-motorcare.co.uk](http://www.bowron-motorcare.co.uk)**



## County Report



What a racket: four old planes; three spitfires and a hurricane that were on their way back from the flypast commemorating 80 years since the Battle of Britain. The hairs stood up on the back of my neck and I stood in quiet, respectful awe. Planes in the sky are rare, reminding us that all is not well.

We have been with COVID-19 for eight months now and it is affecting us in many different ways, less travel, more screen time, less socialising and shopping in the High street, fewer bustling restaurants and the joy of six... but what if there is a vaccine in the New Year, maybe for the spring? What if the therapeutics can be engineered and what if we find that we get back to something like normal by Easter? It might be a pipedream, but I am optimistic, and the science is working hard at the moment. Furlough has been a Godsend but is now unwinding and jobs lost; anticipating this, I have asked that we put a little more into the CAB and the Money Advice Unit, as well as the voluntary sector to help as much as possible.

The good news is that as I write the infection levels in Hertfordshire are under control, this isn't the North East or West or parts of the Midlands, lets hope it stays that way. Now go and get your Flu jab, it could be a long winter. And a quick shout out to all our care workers... thank you for day-in/day-out, looking after our frail, elderly and disabled. You are all stars.

Whilst on health, the Hospital Trust has just announced that Watford, Hemel and St Albans will be refurbished and re-built to the tune of £590m. That is a lot of making good and whilst I would have preferred a new hospital, I look forward to a better health offer across West Hertfordshire. Now we just need a new cancer centre instead of the rather dilapidated Mount Vernon; I will keep pushing on this, we need some new buildings for new kit and treatments. Having said that I have nothing but praise for the nurses and doctors who perform miracles on our behalf.

Some good national news, the number of serious car injuries in the last year is as low as recorded so locally that means the combination of village cameras, the SIDS and their volunteers must be making a difference. Cars are safer but watch your speed especially on Chipperfield and Chesham road. A small plea, if you have a hedge bordering a road, footpath or pavement please give it a good cutback. This year, because of COVID-19, highway work was delayed but I have (prompted by you) been chasing down surface water and drainage issues. Green Lane and Hyde Meadows are having work planned to reduce the incidence of flooding. I would like to thank Dave Stent and Julie Steer who bring many of the Highway and Environmental issues to my attention.

We also owe Mr. Stent a debt of thanks for his work chairing the education trust that wraps around Bovingdon, an outstanding primary school during his tenure.

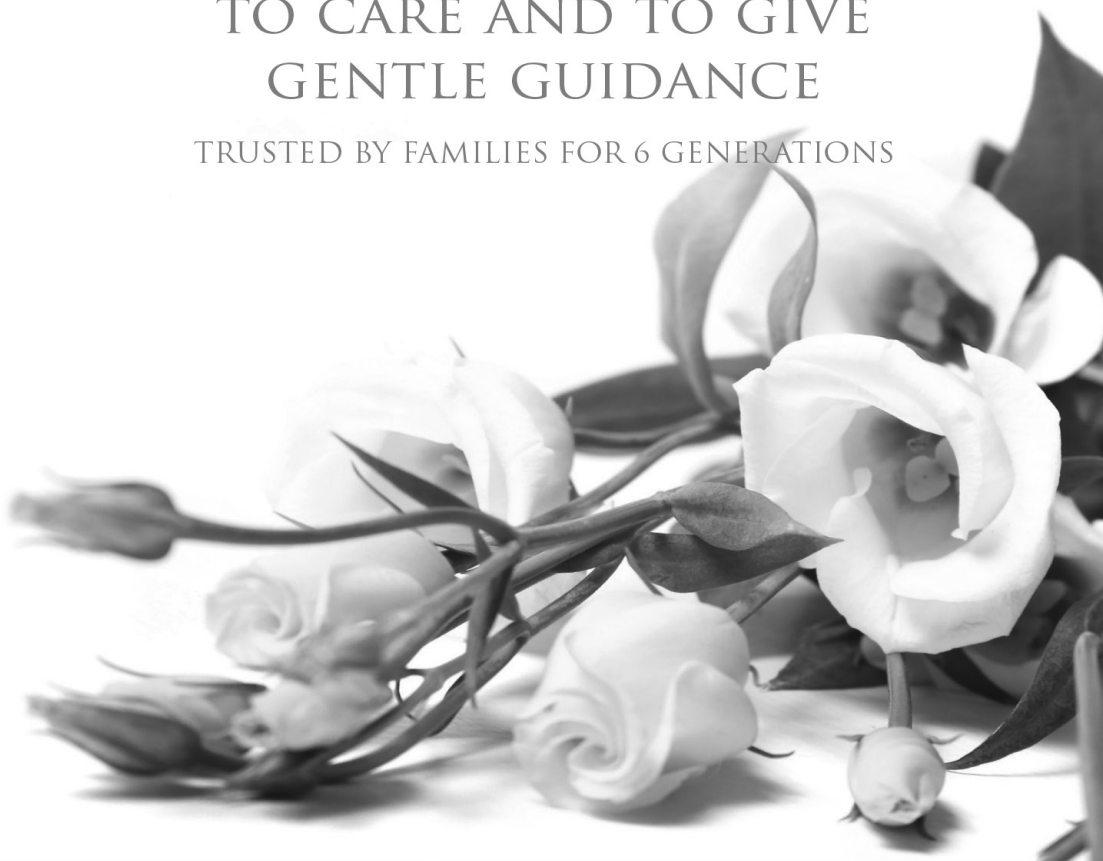
This year my locality budget is £15k with some extra for COVID-19 support but if you run a village organisation consider a grant and get in touch.

Take care this Autumn.

*Cllr. Richard Roberts, Herts County Council*  
*richard.roberts@hertfordshire.gov.uk / 07923 139092 / 01992 556557*

WHEN YOU MOST NEED  
SOMEONE TO LISTEN,  
TO CARE AND TO GIVE  
GENTLE GUIDANCE

TRUSTED BY FAMILIES FOR 6 GENERATIONS



FUNERAL DIRECTORS  
**A&C TADMAN LTD**  
EST. 1841

CALL US TODAY ON 01923 264296

39A HIGH STREET, KINGS LANGLEY, HERTFORDSHIRE, WD4 8AB  
INFO@ACTADMAN.CO.UK WWW.ACTADMAN.CO.UK

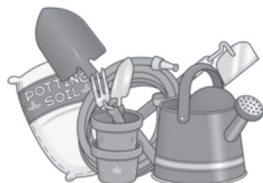
A & C TADMAN FUNERALS WITH PEACE OF MIND AND STYLE

## **Bovingdon and District Horticultural Society**



Droughts, floods, gales and pests are the usual problems that we gardeners face, making us a resilient bunch. So when the challenge of COVID-19 arrived most of us turned to our gardens and soldiered on. After an exceptionally warm and wet winter we were preparing for our Spring Show when the pandemic began. Reluctantly we cancelled that show but what we did not then know was that, like most organisations, we would ultimately have to cancel our entire 2020 calendar of events.

One positive, however, was the delivery of our bulk order on 21<sup>st</sup> March, just before Lockdown. This meant that some of our members had supplies of compost... an unforeseen consequence of the pandemic was not only a shortage of loo rolls and pasta but garden supplies too. The cancellation of our Annual Plant Sale in May compounded the problems for local gardeners, as supplies of plants were scarce too. Local nurseries stepped into the breach offering plant deliveries and our members also offered plants via our society website.



Suddenly everyone seemed to be turning to growing their own veg. The garden became a refuge providing us with green space and some exercise. Our gardens are probably at their most productive and beautiful after this summer with all the extra time we have been able to spend in them. After the cancellation of both the Summer and Autumn shows, it was decided that we could stage a virtual show. A group of members got together to display fruit and veg. that they had grown, and the photos of their produce can be viewed on our website ([www.bovingdonhortsoc.org.uk](http://www.bovingdonhortsoc.org.uk)).



Inevitably we have had to cancel our annual social evening, as we could not socially distance 90 people in the Memorial Hall. Despite all the cancellations for this year, we have put together a new diary of events for 2021. The speakers we had booked have agreed to come next year so fingers crossed all will be able to go ahead. One of the speakers, Nick Bailey, who often appears on Gardeners' World, will be giving a talk on 24<sup>th</sup> March. This event is open to non-members and tickets will be on sale from January; please see our website for details nearer the time.

If you would like to become a member, please contact our membership secretary Mike Leon on 833665.

Happy gardening!

*Doreen Woods, 833520 / [www.bovingdonhortsoc.org.uk](http://www.bovingdonhortsoc.org.uk)*



**Shantock Hall Lane, Bovingdon, HP3 0NQ**

We are a small family-owned veterinary practice in Shantock Hall Lane between Bovingdon and Flaunden (map and directions on our website). We are very proud of our custom-built, fully-equipped surgery and our experienced animal-mad staff who can help you with all aspects of pet ownership.

If you need a vet or if you just want some advice, please give us a call on:

**01442 833198**

In the meantime, check out our website to learn more about us.

**[www.hopevets.com](http://www.hopevets.com)**

**Lyn Palmer** M.N.C.H (Acc.) Dip.H I.A.H (25 years exp.) Reiki Master

*Accredited member of The National Council of Hypnotherapy • Member of the UK Reiki Federation*

#### **HYPNOTHERAPY**

**If, in these challenging times, you find it difficult to cope with anxieties or motivating yourself to overcome your fears or loss of confidence...**

*Hypnotherapy can help with many issues including:*

Anxiety	Panic Attacks	Fears and Phobias
Insomnia	Weight Issues	Emotional Issues
Stress Reduction		Confidence Building

and much more...

#### **REIKI TREATMENTS**

**Whether you're stressed, run down, anxious or in need of healing of any kind**

Gentle Reiki treatments can help balance physical, mental and emotional issues.

When energy is at a low ebb we may sometimes feel vulnerable, weak, open to illness and disease. Reiki can bring comfort, and help to improve strength and vitality. Reiki can also enhance energy when you're feeling happy, well, strong and confident too!

*Experience Relaxation Beyond Words*

**For further information, book an appointment, or to have a chat about your concerns, please contact me**

**07889 159727 / 01442 833688 / [lynpalmertherapies@gmail.com](mailto:lynpalmertherapies@gmail.com)**

## **News from St Lawrence Church**



Our Register of Services contains a three-month gap between our last service before Lockdown, on Mothering Sunday, and the beginning of July. Not since the English church (then entirely Catholic) was excommunicated by Pope Innocent in 1208, as a result of King John refusing to accept the Pope's nominee for Archbishop of Canterbury, has such a suspension of worship taken place. Then the issue was politics, not a pandemic, and it lasted six years. Happily the more recent hiatus was brief in comparison and we are now back in church, worshipping in a socially distanced way, and able to conduct baptisms, weddings and funerals. But while it lasted it felt very strange, as if we were in exile from our home.

The Bible has many stories of exile and wilderness experience. Liberated from slavery in Egypt, the Israelites journeyed through the wilderness for 40 years (40 is a standard designation meaning 'a very long time') before they reached their Promised Land. Much later, they were conquered by successive regional super powers and carted off into exile, their city of Jerusalem and its temple in ruins. 'By the waters of Babylon we laid down and wept', they sang. Jesus spent time — 40 days — in the wilderness at the start of his ministry, being asked fundamental questions about his role. And this 'wilderness experience' was repeated on the night before he died, and again as he endured the agony of the cross and cried out, 'My God, my God, why have you forsaken me?'

The last six months (or eight by the time you read this) have been a wilderness experience for many. Some met it head on in March and April, as they lost loved ones to the virus or put themselves at risk every day as front line workers. Others saw it more gradually as the isolation dragged on for weeks on end. Some are only now facing the wilderness of redundancy after furlough or the stress of adapting to school and social interaction after a long period of loneliness. And for all of us there is the uncertainty of what the future holds. How long will this virus last? Will we be able to celebrate Christmas? How can we plan for the future?

Our Christian faith gives us hope in times of darkness. Just as God stayed faithful to the Israelites in exile, bringing them back to restore Jerusalem, so he never forsook his Son Jesus but brought him from death to life through his resurrection on Easter Day. God journeys with us through our wilderness, always by our side, ready to comfort, reassure and strengthen us when we ask. We may not know what the future holds, and I certainly don't know exactly what shape our Christmas celebrations will take this year, but I do know that we will read the Christmas gospel and understand, perhaps more profoundly than ever before, that 'the light shines in the darkness, and the darkness has not overcome it'.

With prayers and best wishes

*Reverend Charles Burch  
Vicar of Bovingdon  
[vicar@stlawrencebovingdon.com](mailto:vicar@stlawrencebovingdon.com)*



# EMMA STEVENS

## ACCOUNTANCY LIMITED

Chartered Certified Accountants based in the office at the rear of  
14 High Street, Bovingdon, Hertfordshire HP3 0HG

We specialise in accountancy and tax support for small  
owner-run businesses. We offer a tailored package for  
your business at a fixed fee.

We also offer personal tax return competition for individuals.  
A personal tax return starts from £330 inclusive of VAT.

Give us a call on **01442 831462** or visit our website  
**[www.emmastevensaccountancy.co.uk](http://www.emmastevensaccountancy.co.uk)**



**MAKING TAX DIGITAL *READY***

## **Bovingdon Cricket Club**



Indoor nets came to an abrupt end when we went in to Lockdown in mid-March. With the easing of lockdown restrictions at the end of May, there was a lot of enthusiasm to return to nets again: initially two people at a time on a strict rota and then six at a time, using the mobile net out on the square. With the Prime Minister expressing concerns, first about the cricket ball as a 'vector of disease' and then about changing rooms and teas (neither of which ECB planned to allow for cricket to get underway), at one point it looked unlikely that there would be any cricket at all this summer.

But then there was a sudden change and we were given the go-ahead to resume from mid-July. It meant that we played half a season, with matches all the way up until the end of September. It was certainly a season like no other: matches were shortened, there was no promotion or relegation in the league, we had hygiene breaks to sanitise the ball and our hands every six overs, with the changing rooms out of use, we all arrived changed and there were no teas. But the modifications didn't impact on the enjoyment and we played some great matches — 20 in all, winning eight and losing 12.

In August, we hosted the Lords Taverners, captained by former Warwickshire and England player Tim Munton. It was a fantastic afternoon of cricket and an incredibly close game that went to the very last ball (ending up in their favour rather than ours). The league side won four of the seven games they played (with one lost due to the weather and one due to the Luton lockdown) and they finished fourth in Division 7B, our best performance for years. While it wasn't a season of great individual performances, it was fantastic to be back enjoying cricket on Bovingdon Green.

*Mark Carine, Hon. Secretary, 07738 200297*  
*bovingdoncc@hotmail.com / www.facebook.com/BovingdonCC / @BovCricketClub*

---

## **Friends of St Lawrence Trust**

Registered Charity No. 1112950



The Friends of St Lawrence Church Trust exists in order to help ensure the preservation of Bovingdon's Parish Church and Churchyard for current and future generations. We are a registered charity, which is independent from St Lawrence Church but we work closely with it in order to fulfil our objectives.

We have been unable to run any of our usual fund-raising events so far this year, due to the ongoing COVID-19 situation, but we are selling Christmas cards (showing the church and churchyard during the snow) to raise much needed funds for St Lawrence. They will be sold in packs of 10 for £6 (no increase on last year's prices) and people can order them by contacting me on the details below.

Thank you for supporting your church.

*John Walker, Chairman & Treasurer*  
*834025 / john@adaptainer.co.uk*





# Bovington Memorial Hall

Registered Charity No. 238850 / Gift Aid XR07748

The Memorial Hall is located in the heart of the village and is an ideal venue for parties, christenings, weddings or any other social gathering. The Hall, run by the Parish Council via the Hall Management Committee, is the centre of a wide variety of regular village activities, including a pre-school, dance and theatre groups, exercise classes, local clubs and dog training to name but a few. Horticultural shows, a monthly village market (selling homemade produce) and private functions also make full use of its many facilities.

*Further information and hall hire charges can be found on the Parish Council website*  
**[www.bovingdonparishcouncil.gov.uk](http://www.bovingdonparishcouncil.gov.uk)**

Facilities include:

- Main Hall including Kitchen and Garden (maximum 130 seated) •
- Clubroom (maximum 30 seated) • Large production stage in Main Hall •
- Large enclosed rear garden • Internal and external toilets for the disabled •
- Loop system (for the benefit of the hard of hearing) in the Main Hall •
- A fully equipped kitchen • Projector screens in Main Hall and Clubroom •
- Projection stand • Table tennis table • PA system in the Main Hall •



**Keep an eye out on the noticeboards for posters and updates on what is happening in the Hall**

**To view the hall or to make a booking,  
please contact Lisa or Mike at the Parish Office  
833036 or email [office@bovingdonparishcouncil.gov.uk](mailto:office@bovingdonparishcouncil.gov.uk)**

## **Bovingdon Neighbourhood Plan**



The Neighbourhood Plan Steering Group was established in June 2018 and was meeting each month on a Tuesday evening. In addition, each group was meeting separately, to advance the four main areas of the plan: Housing, Transport, Business, and Community and Environment. The past six months has made the task much more difficult with meetings being held via Zoom, however, despite these challenges, progress has continued to be made on the Bovingdon Neighbourhood Plan.

We spent a great deal of time canvassing residents' views, researching and gathering evidence and are now at a stage where the groups are writing policies for the final plan. The main purpose of a Neighbourhood Plan is to create policies on 'land use' and each group has been using the information gathered to formulate policies specific to their areas.

- The **Transport Group** are looking at ways to improve public transport, parking provision in the High Street, road safety, encourage alternative modes of transport and reduce traffic flow through the village.
- The **Business Group** are aiming to protect and improve the High Street as a commercial zone by upgrading the layout, attractiveness and parking, support existing businesses and protect employment within the parish, and improve the communications infrastructure.
- The **Community and Environment Group** are seeking to improve and extend community and sports facilities, and to protect and conserve buildings, green spaces and other valued assets within the parish. They are also looking at establishing policies that codify community and environmental protections for all new developments.
- The **Housing Group** probably has the most difficult task of all: looking at areas which would be most suited to development within Bovingdon Parish. This task has been hampered by the lack of a current Local Plan from Dacorum Borough Council. The Housing Group has been carrying out assessments on sites put forward by landowners, as part of Dacorum's 'Call for Sites' and on potential brownfield sites within the village envelope. Each site has been graded as to its suitability for development. In addition, the group has been formulating design criteria to ensure all future developments meet high standards of design and build.

Once the draft policies have been finalised, we shall be holding a public consultation with residents to gather feedback on our proposed policies. We are hoping to hold an exhibition at the Memorial Hall: this may require pre-booked time slots under the current COVID-19 restrictions. We will also publish the policies on the Parish Council website and are looking to use YouTube and Zoom to interact with the community. Please check the Bovingdon Parish Council website and Facebook pages for details.

*Julia Marshall, Chair of Neighbourhood Plan Steering Group*  
Email: [neighbourhoodplan@bovingdonparishcouncil.gov.uk](mailto:neighbourhoodplan@bovingdonparishcouncil.gov.uk)  
[www.bovingdonparishcouncil.gov.uk/neighbourhood\\_plan](http://www.bovingdonparishcouncil.gov.uk/neighbourhood_plan)  
[www.facebook.com/bovingdonparish](https://www.facebook.com/bovingdonparish)

# Dog lovers wanted

Join our local host community



## Companionship, friendship and fun are guaranteed!

- Dogs to suit your lifestyle
- Completely flexible
- Trial stays to ensure compatibility
- Full support and advice
- A playmate for your own dog



**BarkingMad.uk.com** ✓TRUSTPILOT

Carole Chester 01442 832594

carole.chester@barkingmad.uk.com

★★★★★

# Your dog's holiday starts here

Devoted to dogs since ~~2006~~  
Forever



We provide loving home from home holiday care for your dog. Everything is arranged, overseen and supported locally by our friendly dog care professionals. We're the experts at making your dog feel at home.



**BarkingMad.uk.com** ✓TRUSTPILOT

★★★★★



# Your child is God's gift

Celebrate the arrival of your little miracle with a joyful christening at your local Church — St Lawrence.

New-comers welcome

Find out more by contacting  
Karen — 07913 313843  
or baptism@stlawrencebovingdon.com

www.stlawrencebovingdon.com



## **1<sup>st</sup> Bovingdon Scout Group**



As for most of us 2020 has been a challenging year for 1<sup>st</sup> Bovingdon Scout Group. We had hoped that Beavers, Cubs and Scouts would be doing more camping following seven days at Cubjam and 12 days at the Jamborette in the Netherlands last year.

While not camping away, we have undertaken badges and camps at home through the Lockdown, making the most of digital meetings on Zoom.

Fund-raising has been going well and we have now raised over £20,000 towards our new Scout HQ, as well as acquiring lots of new camping equipment, which we can't wait to use! Many thanks to the Boxmoor Trust, the Co-Op, the Bell Pub for an excellent quiz night and, of course, all our supporters in Bovingdon.

Monday 21<sup>st</sup> September we returned to Scouting, making fires, toasting Marshmallows and playing games, as the pictures show. This is all in our COVID-safe, risk-assessed environment in line with government and Scouting guidelines.



We have plenty of young people who want to take part in Beavers, Cubs and Scouts in Bovingdon but really need some more leaders, all of whom will receive full training from the Scouting organisation. It's been great seeing the volunteering in the pandemic and Scouting has always been an organisation driven by volunteers. I hope the spirit we have seen recently will lead to more people in Bovingdon volunteering to be Leaders for the 1<sup>st</sup> Bovingdon Scout Group. Please contact me for more details.

*Ross Dorras, 07876 398392 / [ross.dorras@btinternet.com](mailto:ross.dorras@btinternet.com)*



# **SEISHINKAI SHOTOKAN KARATE INTERNATIONAL (SSKI)**

[www.sski.org](http://www.sski.org)

Beginners\* Karate classes for all! If you are looking to try a new martial art, keep fit, or even train for the next Olympics, why not come on down and give Karate a go. It teaches discipline, instils confidence and develops fitness, but most of all it is good fun!

*\*Classes are for male and females 14 years and over*



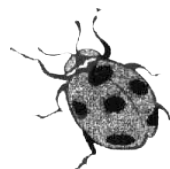
Contact **Sensei Jeff Carson**  
on **07855 958549** or [sski.jeff.sensei@gmail.com](mailto:sski.jeff.sensei@gmail.com)  
to register your interest or find out more.

**Classes held at Bovingdon Memorial Hall  
Every Monday and Wednesday 6-7pm**



## Ladybirds Club

Hooray! Bovingdon News has arrived through the letterbox! Thanks to all those involved in contributing to this copy during these difficult times. It sure is the simplest things in life that mean so much at the moment.



It was way back in March that we were last together having a wonderful evening at Little Hay celebrating the 55<sup>th</sup> anniversary of the club (the very first meeting was held on 3<sup>rd</sup> March 1965 by Margaret Horwood). Good food, lovely company, great atmosphere and lots of socializing... happy times.

Members have since been making lots of phone calls, sending emails, taking daily exercise around the village, and having small social gatherings outdoors over a cup of tea and a chat. Lots of jigsaws being done, photos being sorted, along with reminiscing of times gone by, gardening and catching up with friends and relations. Thank goodness for gardens, gorgeous weather and living in such a wonderful village.

The club has several keyworkers so, on behalf of everyone, a huge thank you for all you are doing for us. Other members are shopping, collecting prescriptions, crocheting extensions for masks for the Marie Curie nurses and offering a hearing aid service for batteries etc and lots more.... too much to mention.



We donated £160 to St Lawrence Church last year towards a replacement bench by the West door. This was some of the money we raised at the 2019 Summer Social Evenings along with bring-and-buys. The bench is now in position and was blessed at the family service on a beautiful sunny Sunday morning in August. Four Ladybirds were in attendance, along with members of the late Captain Glenister's family.

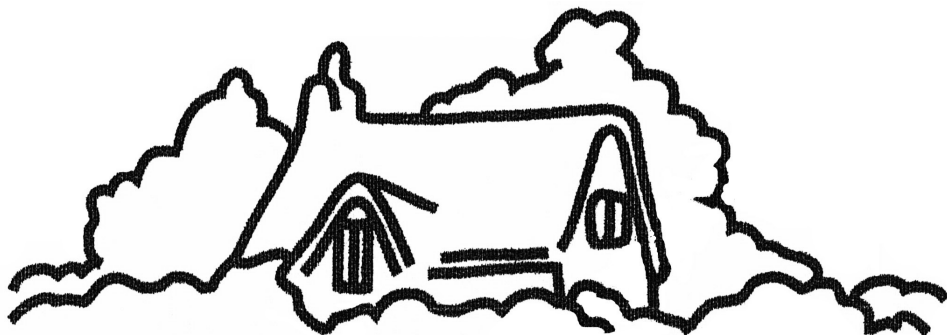
Other donations were made as follows:

- £25 to Alzheimers in memory of Pauline Jarmin
- £30 to Great Ormond St Hospital Children's Society
- £100 to Air Ambulance
- £20 to The Poppy Factory

At the time of writing this we have had tropical weather and today much needed rain, along with thunder and lightening. 2020 has been a year of firsts and certainly not all good. As for the club meeting up again in the Memorial Hall, we have our bookings in place for November and December and all of next year and plan on welcoming members back with several club evenings once social distancing is lifted.

Keep smiling, keep safe and 'we will meet again'.

*Sue Baxter, 831804 / Kathy Banks, 832702*



# PENDLEY ESTATES

LAND AND ESTATE AGENTS  
PROPERTY CONSULTANTS

10 HIGH STREET, BOVINGDON  
HERTFORDSHIRE HP3 0HG  
01442 834834 / bovingdon@pendley.co.uk

1 HIGH STREET, KINGS LANGLEY  
HERTFORDSHIRE WD4 8AB  
01923 270072 / kings@pendley.co.uk

[www.pendley.co.uk](http://www.pendley.co.uk)

INDEPENDENT ADVICE  
TRADITIONAL VALUES



Lockdown Ramblings... early this year Bovingdon Care was re-named as Bovingdon Connect, in order to remove any implication that personal care might be available as part of the service. This was going to be publicised when the May issue of Bovingdon News, containing appropriate articles, hit the streets. However, those plans were thwarted when the pandemic landed on us all. Lockdown happened and COVID-19 sent Bovingdon News into the clouds. So, instead of a lovely, tactile, informative booklet to lose down the side of the cushions on the sofa, we have all had to go searching for the information we need via the Parish Council website. Some will argue that it is much easier to locate the phone number of, say, the Horticultural Society using the web than using the index in the book (once retrieved from the sofa) but if you don't know that Bovingdon Connect exists you are much more likely to find out by thumbing through the booklet (before it slips into the sofa, of course).

So, as spring arrived Lockdown was announced (has anyone used up all those toilet rolls that they purchased, risking life and limb to track them down and then queueing through the night to be first into the shop when it opened?), daily briefings started (where did all the lecterns, posters etc suddenly appear from for that US-style presentation?) and confusion started to reign (rain upon us?).

New words came from the depths of the dictionary or the media: furlough, social distancing, R number, asymptomatic, staycation, Zoom... or old ones were dusted off: redundancy, unemployment, cancellation, refund. Never mind, the sun shone, we could plough our own furlough to get a Round Toit at last and decorate every room in the house, landscape the garden, fix the bike in the garage and cycle off into the sunset, or go for long local walks down footpaths never previously used in all the time we've been in Bovingdon.

Now it's all getting a bit tedious, the weather has gone off the boil, we have to wear masks in trains, shops and similar places (but not in classrooms?), no-one can remember what we can or cannot do or where we can travel, we could have to be in isolation on a local level at a moment's notice and still it is almost impossible to get an appointment with a doctor or hospital.

At Bovingdon Connect, we are discussing when to start the service again. This may happen in two stages: firstly, a cut-down version with a few drivers willing to transport clients provided that a set of safety procedures is carried out and secondly, a return to full service once a vaccine is available.

If you would like to be advised of our plans once they are ready, please use the Connect number 07376 832999 to let us know, either by calling and leaving a message or sending a text message.

*Dick Gardener*  
07860 811154 / [rmgardener@gmail.com](mailto:rmgardener@gmail.com)



## **BOVINGDON TAXI**

**MURRAY ROGERS**

Mercedes E-Class Estate

*Comfortable with  
loads of space*

**07710 470676**

Fully licenced with Dacorum Council  
Airports and London a speciality, but now taking on local work as well  
Operating for 20 years as M.K.Cars  
I am based in Bovingdon - so **no** extra charge  
Agreed fixed prices before job

**PRE-BOOKING PREFERRED**

**Airports . Clubs . London . Theatres . Parcel Service . Company Accounts**

## **St Lawrence Hall FOR HIRE** *Vicarage Lane Bovingdon*

St Lawrence Hall is available for hire at very competitive prices (£10ph ).  
Modern kitchen facilities and capacity of up to 60.  
Ideal for :

*Weddings  
Baptisms  
Birthdays  
Family Celebrations  
Meetings and Teaching*

For further information, please email:  
[admin@stlawrencebovingdon.com](mailto:admin@stlawrencebovingdon.com)  
or call 07756562722

[www.stlawrencebovingdon.com](http://www.stlawrencebovingdon.com)

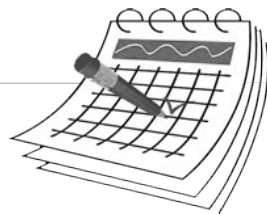
**St. Lawrence Church**  
**BOVINGDON**



## Village Directory

Babies and Toddlers	Hayley	07957 663324
Beavers/Cubs/Scouts	Ross Dorras	07876 398392
Bovingdon Connect (was Bov. Care)	Careline	07376 832999
Bovingdon Village Facebook	<a href="http://www.facebook.com/groups/bovingdon">www.facebook.com/groups/bovingdon</a>	
Bovingdon Players	Robert Peacock	info@bovingdonplayers.com
Bovingdon Primary Academy	School Office	406545
Bovingdon Village Market	Julie Steer	07803 141254
Bowls Club	Simon Johnson	07773 557723
Boxmoor Trust Office		253300
Brownies	Bekki Olah	bekki.olah @highwaysengland.co.uk
CAD Volunteer Centre	Kerry Armogie	kerry@communityactiondacorum.org.uk
Child Health Clinic	Health Visitor	0300 123 7572
Churches	Baptist — Rev Mary Moody	831756
	Catholic — Rector Michele du Saire	01923 264377
	St Lawrence — Rev Charles Burch	833298
Cricket Club	Mark Carine	bovingdoncc@hotmail.com
Crimestoppers		0800 555111
Day Centre	Brenda Franklin	832006
Evening WI	Shirley Hart / Jenny Thirlwell	380355 / 831491
Fire — Community Safety Officer	Kevin Horwood	867116
Fire — Hemel Fire Station		265028
Fire — Home & Safety	www.hertsdirect.org/fire	0300 123 4046
Football Club		bovingdonfc@gmail.com
Friends of Bovingdon Green	Anne Barrett	07973 115056
Friends of St Lawrence	John Walker	834025
Hatha Yoga	Jo Bain	jo@bain-family.org
HMP The Mount	Prison / Visitor Centre	836300 / 836516
Horticultural Society	Doreen Woods	833520
History Group	Sylvia McClelland	pandsmcc@mcclell.plus.com
Ladybirds	Anne Tavener	380405
Library	Enquiries & Mobile Service	0300 123 4049
Lunch Club (Over 60s)	Sue Miller	832569
Meals-on-Wheels	Michael Leon	833665
Neighbourhood Watch	Julie Steer	nwatch_julie@btinternet.com/07803 141254
Parish Clerk	Mike Kember	833036
Police — Hemel Hempstead	www.herts.police.uk	101
Pre-School	Pre-School Office	834188
Rainbows	Karen Dance	kdance66@gmail.com
Royal British Legion	Tom Morkill	834268
Seishinkai Shotokan Karate Int'l	Jeff Carson	07855 958549
Shopmobility	Marlowes, Level A Blue Car Park	259259
St Lawrence Baptism Team	Karen Wright	baptism@stlawrencebovingdon.com
Tennis Club	Craig Blyth — Coaching	07941 550850
	Rebecca Rose — Membership	07903 849919

# Village Diary



## Key

B	Bowls Club	LIB	Library
BC	Baptist Church	MH	Memorial Hall
BG	Bovingdon Green	STL	St Lawrence Church
BPA	Primary Academy	STLH	St Lawrence Hall
C	Clubroom, MH	T	Tennis Club

## November 2020

2	Zoom	Mon	18:30	BPC: Planning Committee Meeting
<b>2</b>	<b>Zoom</b>	<b>Mon</b>	<b>19:30</b>	<b>BPC: Parish Council Meeting</b>
11	BC	Wed	19:30	Evening W! <i>Wild Life on Your Doorstep</i>
23	Zoom	Mon	18:30	BPC: Planning Committee Meeting
29	MH	Sun	17:00	Bovingdon Christmas Lights Switch-On

## December 2020

2	Zoom	Mon	18:30	BPC: Planning Committee Meeting
9	BC	Wed	19:30	Evening W! Comedy Magician
14	Zoom	Mon	18:30	BPC: Planning Committee Meeting
20	STL	Sun	10:00	St Lawrence: Nativity Service
20	STL	Sun	18:30	St Lawrence: Carols by Candlelight
24	STL	Thu	15:00	St Lawrence: Crib Service
24	STL	Thu	23:00	St Lawrence: Midnight Communion
25	STL	Fri	10:00	St Lawrence: Christmas Day Family Communion

## January 2021

12	Zoom	Mon	18:30	BPC: Planning Committee Meeting
<b>12</b>	<b>Zoom</b>	<b>Mon</b>	<b>19:30</b>	<b>BPC: Parish Council Meeting</b>
13	BC	Wed	19:30	Evening W! Social Evening with Games
18	MH	Mon	19:30	Ladybirds: Welcome Back
25	MH	Mon	19:30	Ladybirds

## February 2021

8	MH	Mon	19:30	Ladybirds
10	BC	Wed	19:30	Evening W! TBA
15	Zoom	Mon	18:30	BPC: Planning Committee Meeting
22	MH	Mon	19:30	Ladybirds

## March 2021

1	Zoom	Mon	18:30	BPC: Planning Committee Meeting
<b>1</b>	<b>Zoom</b>	<b>Mon</b>	<b>19:30</b>	<b>BPC: Parish Council Meeting</b>
10	BC	Wed	19:30	Evening W! Craft Meeting
15	MH	Mon	19:30	Ladybirds
17	BC	Wed	19:30	Horticultural Society: <i>The Devil's Garden</i>
22	Zoom	Mon	18:30	BPC: Planning Committee Meeting
24	BC	Wed	19:30	Horticultural Society: Talk by Nick Bailey
27	MH	Sat	14:00	Horticultural Society: Spring Show and AGM
29	MH	Mon	19:30	Ladybirds

## April 2021

12	Zoom	Mon	18:30	BPC: Planning Committee Meeting
12	MH	Mon	19:30	Ladybirds
14	BC	Wed	19:30	Evening W! <i>Training Guide Dogs for the Blind</i>
22	BC	Thu	19:30	Horticultural Society: <i>Acers for the Small Garden</i>
26	Zoom	Mon	18:30	BPC: Planning Committee Meeting
26	MH	Mon	19:30	Ladybirds

## **Trade Directory**

<i>Page Listing</i>	<i>Company, Name</i>	<i>Contact</i>
17 Accountant	Emma Stevens	07736 835167 / 831462
53 Beauty Therapy	Time 2 Relax, Gill Kedgley	832459
53 Butcher Shop	Meat Hook, Guy Coertze	07570 538209
3 Caterer	Leon Catering	832277 / 01923 249799
11 Childcare	Montessori at Home, Angie de Mink	07955 691721
59 Computer Tuition	Reeboot, Karen Cramer-Smer	388537
55 Counselling	WAY-in	07307 199625
7 Digital Transcription	Farrspark, Steph Farrer	07913 086477
21 Dog Boarding Service	Barking Mad, Carole Chester	832594
39 Driving Instructor	Pete Moore	07879 831750 / 832889
9 Education	Lockers Park School	251712
9 Electrician	J C Cooke	07905 356895 / 832153
25 Estate Agent	Pendley Estates	834834
53 Fuel Merchant	G C Parish & Sons	832224 / 832341
13 Funeral Directors	A & C Tadman	01923 264296
60 Funeral Directors	White Rose Funeral Directors	953145
11 Garage Services	Bowron Motorcare	07860 882970 / 834634
41 Gutter Cleaning/Repairs	Gutterbuster, Adam Cooper	07749 977997 / 874540
59 Hair Dressing (Mobile)	Hair by Fiona	07885 491988
39 Hall Lettings	Baptist Church      hallhire.bovingdonbaptist@gmail.com	
19 Hall Lettings	Memorial Hall	833036
27 Hall Lettings	St Lawrence Hall	07756 562722
49 Hardware and DIY	Jarman and Sons	832141
39 Health & Beauty	Health Hub, Zandra Christie	07866 587117
59 Health & Beauty	Reflections Clinic	07711 846731 / 834236
15 Hypnotherapy/Reiki	Lyn Palmer	07889 159727 / 833688
43 Market	Bov. Village Market, Julie Steer	07803 141254
23 Martial Arts — Karate	SSKI, Jeff Carson	07855 958549
41 Oven Cleaning	Ovendazzle	07853 206193 / 01923 261567
7 Page Design	Farrspark, Steph Farrer	07913 086477
41 Painter/Decorator	Allan Brown	832103
51 Plumbing	AA Plumbing Solutions	07782 122555 / 831519
37 Plumbing & Heating	Manor Heating, Vic McDonald	07712 265034 / 834373
57 Pre-School	Bovingdon Pre-School	834188
35 Solicitors	Underwoods	430900
27 Taxi Service	Bovingdon Taxi, Murray Rogers	07710 470676
7 Taxi Service	MRH Cars, Mark Humphrey	07973 470202 / 500750
51 Taxi Service	Pro-Shuttle, Gary Matthews	07769 112922
3 Travel Agency	Tailor Made Holidays	737847
45 Travel Agency	Travel Impressions	890265
45 Tutor	Ahead Tuition	01494 416110
15 Veterinary Practice	Hope Vets	833198

## Regular Events



### Key

B	Bowls Club	LIB	Library
BC	Baptist Church	MH	Memorial Hall
BG	Bovingdon Green	STL	St Lawrence Church
BPA	Primary Academy	STLH	St Lawrence Hall
C	Clubroom, MH	T	Tennis Club
FC	Football Club	TT	Term time only

### Monday

MH	09:00-13:00	Bovingdon Pre-School <sup>TT</sup>
BC	09:00-11:00	BBC: Baby & Toddler Group
STLH	09:15-10:30	Hatha Yoga
BC	10:30-12:00	Coffee Morning (1 <sup>st</sup> and 3 <sup>rd</sup> )
MH	14:00-16:00	The Art Group
BPA	17:00-18:00	Beavers <sup>TT</sup>
MH	18:00-19:00	SSKI Karate
BC	18:00-19:00	Pilates (Lisa Giles)
BPA	18:00-19:30	Cubs <sup>TT</sup>
BC	19:15-20:15	Pilates (Lisa Giles)
BPA	19:30-21:00	Scouts <sup>TT</sup>
MH	19:30-21:30	Ladybirds (fortnightly)
STLH	19:30-20:30	Beginners Yoga Class

### Tuesday

MH	09:00-13:00	Bovingdon Pre-School <sup>TT</sup>
C	14:00-15:00	Child Health Clinic (fortnightly)
MH	16:00-16:30	Bov. Dance Academy: Mini Ballet (ages 2-4)
BC	16:30-17:30	Rainbows <sup>TT</sup>
MH	16:35-17:20	Bov. Dance Academy: Contemporary Dance (age 9+)
BC	18:00-19:30	Brownies <sup>TT</sup>
MH	18:00-20:30	Kredible Kg (puppy/dog obedience classes)
BC	19:45-20:45	Pilates (Lisa Giles)

### Wednesday

MH	09:00-13:00	Bovingdon Pre-School <sup>TT</sup>
STLH	10:00-11:30	St Lawrence Toddler Group
FC	10:30-15:30	Bovingdon Day Care
MH	16:00-17:30	Bovingdon Dance Academy
T	17:00	Adult Social Tennis
MH	18:00-19:00	SSKI Karate
MH	19:00-20:15	Hatha Yoga
BC	19:30-21:30	Evening WI (monthly)

### Thursday

MH	09:00-13:00	Bovingdon Pre-School <sup>TT</sup>
MH	17:00-18:00	Loko Dance (Freestyle and Street Dance — age 3+)
MH	18:45-20:15	Bovingdon Yoga Fitness

## **Useful Contacts**

### **General**

Dacorum BC	Civic Centre, Hemel Hempstead ( <a href="http://www.dacorum.gov.uk">www.dacorum.gov.uk</a> )	228000
Dog Warden		228418
Drainage Problems	Council Tenants	228666
	Public Drains, Thames Water	0845 920 0800
Environmental Health		228455
Handy Person Scheme	Age Concern Dacorum	259049
Hertfordshire CC	County Hall, Hertford SG13 8DE	01992 555555
Mediation Hertfordshire	<a href="mailto:help@mediationherts.org.uk">help@mediationherts.org.uk</a>	268044
Pest Control		228275
Wasp Nests	Dacorum Call Centre	867867

### **Dacorum Fault Reporting — Self-help**

You can report faults in Dacorum such as abandoned vehicles, dog fouling, fly tipping, waste collection issues and more... see [www.dacorum.gov.uk](http://www.dacorum.gov.uk) for more details.

### **Refuse Bank Holiday Collections**

Details of Bank Holiday collection dates will be published in local press and will also be available on the Dacorum website: <http://www.dacorum.gov.uk>

### **Herts Highways Fault Reporting — Self-help**

You can report faults in Hertfordshire such as potholes, street light issues, traffic signal problems and more. You will get a reference number and can enter an email address to receive updates... see [www.hertsdirect.org/services/transtreets/highways/honlineservices/hfr/](http://www.hertsdirect.org/services/transtreets/highways/honlineservices/hfr/) for more details.

### **Public Transport (Bus & Train Times)**

Carousel Bus	01494 450151	<a href="http://www.carouselbuses.co.uk">www.carouselbuses.co.uk</a>
Chiltern Railways	0845 600 5165	<a href="http://www.chilternrailways.co.uk">www.chilternrailways.co.uk</a>
London Midland	0844 811 0133	<a href="http://www.londonmidland.com">www.londonmidland.com</a>
London Underground	0845 330 9880	<a href="http://www.tfl.gov.uk/tube">www.tfl.gov.uk/tube</a>
National Rail Enquiries	08457 484950	<a href="http://www.nationalrail.co.uk">www.nationalrail.co.uk</a>
Red Rose (352)	01296 747926	<a href="http://www.redrosetravel.com">www.redrosetravel.com</a>
Traveline	0871 200 2233	<a href="http://www.traveline.info">www.traveline.info</a>

### **Utilities**

Electric Hazard		0800 404090
Power Failure (local provider)	<a href="http://www.nationalgrid.com/UK/Safety/Power-cut/">www.nationalgrid.com/UK/Safety/Power-cut/</a>	
Gas Leaks		0800 111999
Water Leaks	<a href="http://www.thameswater.co.uk/reportaleakonline">www.thameswater.co.uk/reportaleakonline</a>	
Sewage Emergencies		0845 9200 800

## **Village Medical Services**

<b>Chemist</b>	Manor Pharmacy	37 High Street	832127
<b>Dentist</b>	Simon Michaels	60 High Street	832212
	Laurel Cottage	57 High Street	833922
<b>Doctor</b>	Archway Surgery	52 High Street	833380
	Longmeadow Surgery	16 High Street	833295





## Regular Events (cont'd)



### Key

B	Bowls Club	LIB	Library
BC	Baptist Church	MH	Memorial Hall
BG	Bovingdon Green	STL	St Lawrence Church
BPA	Primary Academy	STLH	St Lawrence Hall
C	Clubroom, MH	T	Tennis Club
FC	Football Club	TT	Term time only

### Friday

MH	09:00-13:00	Bovingdon Pre-School <sup>TT</sup>
LIB	09:15-09:45	Toddler Tales
T	09:15	Ladies Tennis
BC	09:30-10:30	Pilates (Lisa Giles)
LIB	10:00-11:30	Knit 'n' Natter (NOT last Friday of the month)
BC	11:30-13:30	Bovingdon Lunch Club (Over 60s)
STLH	18:00-19:30	Martial Arts

### Saturday

T	08:00	Tennis — Men's Practice
BC	08:15-09:15	Pilates (Lisa Giles)
BC	09:30-10:30	Pilates (Lisa Giles)
MH	10:00-11:00	Horticultural Society Supply Hut (rear of MH)
MH	10:00-12:00	Bovingdon Village Market (monthly — 3 <sup>rd</sup> Saturday)
STLH	10:45-12:30	Dancing
T	14:00	Social Tennis

### Sunday

T	11:00	Social Tennis
STL	08:00	St Lawrence: Book of Common Prayer
STL	09:30-10:00	St Lawrence: Family Praise (not 1 <sup>st</sup> Sunday)
STL	10:00-10:30	St Lawrence: Family Communion (1 <sup>st</sup> Sunday Only)
STL	10:30-11:30	St Lawrence: Parish Communion or Morning Prayer
BC	10:30	Baptist Church: Sunday Service

*Please note: all regular events listed are subject to COVID-19 Guidelines. Please check with the relevant organisers to see if these events are taking place at the present time.*

## Village Diary/Regular Events Listings

If you have any events (either regular events or one-offs) you wish to publicise in the Village Diary or Regular Event listings, please send the details to me and I will ensure their inclusion in the relevant issue — thank you.

Steph Farrer, Editor, Bovingdon News  
[steph@farrspark.co.uk](mailto:steph@farrspark.co.uk) / 07913 086477



## **Bovingdon Bowls Club**



Well, I suppose we should consider ourselves luckier than some in that we were able to get our annual foreign trip, this year to Cyprus, in the first week of March, the week before the grinding halt. Yes, we did miss out on the Weymouth trip in August and, of course, the season was a non-event for the most part, but the positive spirit within the club was always going to win through and we're back doing what we can to keep ourselves involved... an excellent turnout for the Captain's v President's Day was testament to this.

Off the green, our Tuesday and Friday darts and social nights are back almost in full swing and although it is too early to start the Bingo nights just yet they will return when possible. We thank Sam for once again organising her Macmillan Coffee Morning; last year she helped raise hundreds of pounds for the charity and hopefully this one will be just as successful.

The winter league is eagerly awaited as usual — even after 30 years it still holds a special place on the calendar; if you are around the club on a Sunday morning, stop and have a gander or come in and sit and watch the fun. After our unprecedented success in District and County competitions last season we must look to next year to consolidate our standing in the area.

Why not come along and join us and be part of a club that offers a healthy outdoor activity for all ages and abilities and much more besides. By the time this issue comes out we will have held a couple of Open Days in October and we will do so again in the spring, but you don't have to wait until then. If you are interested in seeing what we are about, pop in or contact our secretary Andy Smith on 07432 082299 or alternatively email me directly.

*Steve Woods, [steveawoods@btinternet.com](mailto:steveawoods@btinternet.com)*

---

## **Bovingdon Evergreen Club**



Sadly, the Share Committee of Bovingdon Evergreen Club have decided to close the club: mainly due to the COVID-19 situation but it's coupled with the fact that most of the members are in the vulnerable age group. The club has been going for almost 68 years and over the years we have enjoyed various entertainments, took part in quizzes, played Bingo, listened to talks on a wide range of subjects and had many enjoyable day trips out to places all around the country. We've all had a lot of fun and I feel sure that it will be missed by all its members.

Thank you to anyone who has helped us over the years, and goodbye from us all.

*Sue Lynch*

# UNDERWOODS

## SOLICITORS

### **Quality without Compromise**

**PROUD SPONSORS OF  
HEMEL STORM BASKETBALL,  
BOVINGDON CRICKET CLUB AND  
CAPE TOWN OPERA**

***LOCAL FIRM  
WORLDWIDE REPUTATION  
Offices in Hemel Hempstead and Cape Town***

We can help with:

- Property
- Wills
- Powers of Attorney
- Employment
- Legal Disputes •
- Probate •
- Personal Injury •
- Business Matters •

**79 Marlowes, Hemel Hempstead, Hertfordshire HP1 1LF**  
[info@underwoods-solicitors.co.uk](mailto:info@underwoods-solicitors.co.uk)

# 01442 430900

See Kerry's blog at: [kerryunderwood.wordpress.com](http://kerryunderwood.wordpress.com)

**Underwoods Solicitors is a trading name of Law Abroad Ltd**

 Follow @kerry\_underwood

## **The Bovingdon Players**

Since the Memorial Hall was built in 1921 the Bovingdon Players have staged a staggering number of productions — almost every kind of play you can imagine from classic and contemporary dramas, to comedies and musicals, and pantomimes, tragedies and farces.



Thanks to COVID-19, we haven't been able to put on a major production for some time. Our last play was in November: Martin McDonagh's brilliant dark comedy, *Hangmen*, which told the story of the 'second best Hangman in England' and how he copes with the abolition of hanging. It went very well and was awarded the National Operatic and Dramatic Association's 2019 Best Drama Award for our district, as well as being nominated in the Technical Award category for some very tricky special effects and our leading man, Andy Mills, won Best Actor!

As everyone knows, indoor live performance activities are recognised as having their own special challenges during the pandemic and amateur theatre will undoubtedly be one of the last things to fully get back up and running. Despite not being able even to meet up for social activities (let alone rehearsals or performances) the Bovingdon Players have continued to meet online for chats and play readings, where we have the opportunity to have a bash at plays we couldn't normally consider because of casting and setting limitations.

If you would like to take part in our play readings, are interested in performing or would like to help in the backstage team in Bovingdon Players productions once we are back up and running, do get in touch. We always welcome new members and would love to hear from anyone who fancies joining in.

Thanks to everyone in Bovingdon for coming along and supporting their local theatre group in the Memorial Hall! We look forward to seeing you again as soon as possible.

Robert, [info@bovingdonplayers.com](mailto:info@bovingdonplayers.com)

---

## **Bovingdon Brownies**

2<sup>nd</sup> Bovingdon Brownies has spaces for girls. The Brownies — for girls aged 7-10 — meet on a Tuesday evening (term time only) at the Baptist Church Hall from 5:45-7:15pm, and enjoy games, crafts and activities. If you would like more information, or you have a daughter who would like to join, please contact me.

**Brownies\***

Bekki, 07852 931086 / [bekki.olah@highwaysengland.co.uk](mailto:bekki.olah@highwaysengland.co.uk)

# Manor Heating

## Plumbing & Heating Services

**Phone Vic McDonald on**  
**Tel: 01442 834373**  
**Mobile: 07712 265034**



[www.manor-heating.co.uk](http://www.manor-heating.co.uk)



# Bovingdon & Flaunden Tennis Club



**Newly relaid floodlit courts • Half-price new member rates**

**Try before you join opportunities:**

- Rusty Racket and adult beginner/intermediate groups
- Social tennis on Wednesday evenings or Saturday afternoons
- Improvers social tennis on Sunday afternoons

**Saturday morning junior group coaching:**

- First session for free
- Age 4 upwards

**So if you play, used to play, or simply want to learn to play: COME JOIN US!**

[www.bovingdontennisclub.co.uk](http://www.bovingdontennisclub.co.uk)

## **Bovingdon Village Market**

Bovingdon Village Market is a not-for-profit monthly market for the community, and takes place on the third Saturday of each month: the remaining dates for 2020 are November 19<sup>th</sup> and December 19<sup>th</sup>; please see our advert on page 43 for 2021 dates.



Monies raised are re-invested back into the village: the funds represent the monies raised from stall holder charges less hall rental. The cost of a table is £5 (medium) and £7 (large) and the monthly market is run by volunteers, supported by the stall holders and customers. The last six month's funds have been donated for the November Poppy Display outside the library.

There is a wide range of items available at the market including hand-made gifts, crafts and cards for every occasion, both savoury and sweet food products, plus seasonal plants and vegetables... pop in for a treat: whether home-cooked or hand-made!

If you wish to join us as a stall-holder or volunteer, then please contact me.

*Julie Steer, 07803 141254*

# **Join us for**

# **TEA TIME**

**A time to enjoy afternoon tea with friends...  
and make new ones**

We miss you and look forward to seeing you again!  
As soon as restrictions are lifted we will let you know that  
Tea Time can start on the first Tuesday of every month  
at St Lawrence Hall from 3pm... just turn up!

## **01442 831583**



# YOUR HEALTH HUB DIRECTORY



## Local Health & Wellbeing magazine and website

Visit our website for a host  
of valuable health & wellbeing  
information, give-aways and a  
directory of local practitioners

E | [zandra@yourhealthhub.uk](mailto:zandra@yourhealthhub.uk)  
[www.yourhealthhub.uk](http://www.yourhealthhub.uk)

## Bovingdon Baptist Church

High Street, Bovingdon HP3 0HG

[www.bovingdonbaptist.org.uk](http://www.bovingdonbaptist.org.uk)

The members of Bovingdon Baptist Church are pleased to share our church building with the wider community. Carpeted throughout and centrally heated, the church is suitable for children's parties, fitness classes, and community groups sympathetic with our Christian values. It is not available for general commercial use.

**£20/hour whole church, including kitchen (one-off bookings, seats 85 in main hall)**

**£16/hour small meeting room and kitchen (one-off bookings, seats 10-15)**

Discounted rates are available for regular bookings

For all hall bookings and enquiries, please email:

**[hallhire.bovingdonbaptist@gmail.com](mailto:hallhire.bovingdonbaptist@gmail.com)**

PETER MOORE ADI  
DRIVING INSTRUCTOR

**07879 831750**

**01442 832889**



BLOCK BOOKING DISCOUNT AVAILABLE  
PASS PLUS AVAILABLE



## **Bovingdon & Flaunden Tennis Club**



Bovingdon & Flaunden Tennis Club heads into what is expected to be its most popular autumn/ winter tennis calendar yet, after a year that has seen the club's popularity soar.

New members from Bovingdon and surrounding towns and villages have doubled, determined to stay active throughout the year, since Lockdown restrictions were eased in the Spring.

It's easy to see the reasons for the increased interest: tennis is well-known for its positive impact on physical and mental well-being and, with a number of members now working from home, the proximity of the club and its exceptional facilities are a further draw.

And there's a lot still to come, as we head into the Autumn/Winter calendar with all-court floodlights illuminating the tennis as the nights draw in. Our newly created 'Box Leagues' are scheduled to run throughout the winter, as well as social tennis events aimed at different levels on weeknights and weekends. If you're looking to brush up on your game or just get some practice in, our practice hitting wall is the next in line for an upgrade and is due for completion by Spring 2021.

We have entered six teams (two Mixed, Ladies and Mens) into the Aylesbury District League. Long-time members are really excited to see the courts continue to be so popular.

The club's leadership has invested £100,000 in the club's facilities and investment is planned to continue as Martin Allen takes over from Gordon Bettis after his ten years as club chair.

Whether you're looking to play for the first time, feeling a bit rusty and would like to restart, or an experienced player looking for a new challenge, there has never been a better time to give it a go. Low cost first-time membership, plenty of members of all standards to play against, high quality coaching sessions and social tennis will all help you to get playing this winter.

If you're interested in joining us, check out our website ([www.bovingdontennisclub.co.uk](http://www.bovingdontennisclub.co.uk)), or alternatively find our Facebook group (Bovingdon & Flaunden Tennis Club).



**Your local**

# **GUTTERBUSTER**

cleaning & repairing your gutters

**01442 874540**  
**07749 977997**

## **OVENDAZZLE**

Professional Domestic Oven Cleaning Service

We are a family-run business based in Kings Langley. We clean ovens, hobs, ranges, agas, extractors and microwaves.

Please call **Beata** for a quote on **01923 261567** or **07853 206193**

[www.ovendazzle.co.uk](http://www.ovendazzle.co.uk)

Member of The Association of Approved Oven Cleaners

**Estimates Free**

## **Allan Brown**

**PAINTING & DECORATING SPECIALIST**

56 Hyde Meadows  
Bovingdon  
Hemel Hempstead  
Herts. HP3 0ES

**Tel: (01442) 832103**



*Give us this day our daily bread...*

The Lord's Prayer came to mean so much more to me over Lockdown, when the church family could no longer gather in our building to share bread and wine, but each member prayed and worshipped God in their own home, and our only gatherings happened via video-conferencing. Something else that changed my perspective on it was not being able to take fresh bread for granted! We've only got room for one week's groceries in our fridge-freezer, so at the start of each week it is jam-packed and by the end we're scraping together a meal. My husband is the one who usually makes our bread — but we ran out of yeast in week five of Lockdown, so I started making soda bread (which doesn't need yeast). Two or three weeks later we ran out of flour, and still the supermarket shelves were bare. Praying 'give us this day our daily bread...' and meaning it literally, has helped me to realise how much we actually have to be grateful for — that we've never had to skip a meal altogether, or needed to rely on the foodbank, although so many people in Dacorum do.

Since the COVID-19 Lockdown began, thousands more people have come to rely on food charities. It took a footballer's campaigning to ensure that meal vouchers for disadvantaged families with school-age children would continue over the summer holidays! The recession we have now entered is likely to go on for some time, and unemployment is likely to increase at the end of the furlough scheme. I'm sure I'm not the only one who is praying the Lord's Prayer with a new sense of urgency...

One of the shortest stories Jesus told is found in Matthew chapter 13, verse 33, and it is a lesson from bread-making:

*'[Jesus] told them still another parable: "The kingdom of heaven is like yeast that a woman took and mixed into about thirty kilograms of flour until it worked all through the dough."*

This is a very brief tale describing an everyday task as something of a miracle — a woman working a tiny quantity of yeast into a large amount of flour and so making fresh bread for her whole household. The woman makes a conscious decision and takes deliberate action to mix the yeast all through the dough. She takes something small and ordinary, and uses it to make a big difference. 'The kingdom of heaven is like yeast,' said Jesus. Add faith to the mix and you will begin to see spiritual growth; add it to your recipe for life and see the huge difference it will make.

A woman took yeast (something with great potential for influence and growth), and mixed it into flour until it had worked its way all through the dough. What 'yeast' can you and I take, in these days of uncertainty, economic distress and social distancing and use to make a difference in our 'dough' — our home, school, street, workplace, neighbourhood... to grow the kingdom of God?

At this time of year, we would usually be publicising our Christmas services, Christingle, Live Nativity etc, but we cannot be certain that the usual services and events, with the



# Bovingdon Village Market

Third Saturday Monthly

10am-12noon

2020

Nov 19<sup>th</sup> • Dec 19<sup>th</sup>

2021

Feb 20<sup>th</sup> • Mar 20<sup>th</sup> • Apr 17<sup>th</sup>

May 15<sup>th</sup> • Jun 19<sup>th</sup> • Jul 17<sup>th</sup> • Aug 21<sup>st</sup>

Sep 18<sup>th</sup> • Oct 16<sup>th</sup> • Nov 20<sup>th</sup> • Dec 18<sup>th</sup>

Home Produced Food — Soups, Pasties, Pies (sweet and savoury),  
Quiches, Sausage Rolls, Scones, Cakes, Shortbread, Bakewells,  
Eccles Cakes, Jams, Curds, Marmalade, Chutneys and more

Vegetables and Plants (seasonal), Neal's Yard Remedies,  
Cards for all occasions, Lavender Crafts and Bath Salts,  
Candles, Crafts and Gifts,

**All Enquiries: contact Julie on 07803 141254**



## **News from Bovingdon Baptist Church** (cont'd)

large crowds they draw, will be happening in 2020 due to social distancing guidance, and if they do happen it may not be in the format we've been used to. Perhaps we will film and stream our Christmas services, or continue with our informal 'Zoom Church at Home' meetings. Please check our website for up-to-date information about what's on at BBC and how to log on to join in with virtual worship, usually on Sundays at 10.30am.

If you're feeling isolated, would like to chat, or need some help or prayer, please remember that the village Baptist Church is still here for you.

*Rev Mary Moody, Minister*  
831756 / [minister.bovingdonbaptist@gmail.com](mailto:minister.bovingdonbaptist@gmail.com)  
[www.bovingdonbaptist.org.uk](http://www.bovingdonbaptist.org.uk)

---

## **Bovingdon Community Library Update**



At present our Community Library remains closed due to COVID-19. The main library in Hemel has re-opened but with restrictions, please refer to the Herts library website for more details: [www.hertfordshire.gov.uk/services/libraries-and-archives/libraries-and-archives.aspx](http://www.hertfordshire.gov.uk/services/libraries-and-archives/libraries-and-archives.aspx)

There are over 46 libraries to re-open in Hertfordshire, 30 libraries, which are classed as Tier 1 and Tier 2, have re-opened so far; community libraries are Tier 3 and risk assessments on all the outstanding premises will start late September.

When the library does re-open, hopefully in late Autumn, limited numbers will be permitted in the building at any one time, and there will be new procedures to follow; these will all be advertised locally once we have details.

**Volunteering:** We may also be looking for some new volunteers if you have a few hours to spare.

**Local History:** Unfortunately, this is all on hold at the moment, as no one is able to access the library. We will update you further in the next issue.

**Donations:** If you have any good quality books, recent releases for either adults or children that are now just sitting on the shelf, please consider donating them to the library, once we re-open. We can only accept books in good condition, published in the last four years and only a few at a time. There is a donation bin just inside the main front doors of the library. Where possible, we will add the books to library stock or, if they can't be added, we will sell them and any proceeds will go towards buying new books.

We thank you for your continued support, and we hope you will consider volunteering at your local library or with another local group.

*Julie Steer*  
*Chair, Bovingdon Library Committee*

# Explore... Dream... Discover...

Travel Impressions are specialists in tailor-making holidays to destinations worldwide. If you are thinking of travelling to Canada, USA, Australia, New Zealand, Southern Africa, South America, Asia, India, Sri Lanka, China, Japan or within Europe, please call or email us.

**We can help you create the best itinerary, as we offer:**

Personalised planning — we take the time to get to know you • Friendly, honest advice from an independent travel agency  
Extensive experience to arrange every detail • Using fully bonded tour operators • No booking fees



## Travel Impressions

*A World of Experience*



**01442 890265**

[enquiries@travelimpressions.co.uk](mailto:enquiries@travelimpressions.co.uk)

[www.travelimpressions.co.uk](http://www.travelimpressions.co.uk)

Suite 4, George House, 64 High Street, Tring, Herts. HP23 4AF

## Ahead Tuition

### EXAM AND REVISION SPECIALISTS

ENGLISH, MATHS AND SCIENCE  
PRIMARY, KS3 AND GCSE TUTORING

[WWW.AHEADTUITION.CO.UK](http://WWW.AHEADTUITION.CO.UK)

01494 416110/INFO@AHEADTUITION.CO.UK

**BOOK A FREE TRIAL  
10% DISCOUNT: BUCKS10**

## **Bovingdon Christmas Lights**

The Parish Council, local villagers and businesses continue to work together to bring Christmas lights to the High Street...

## ***A Special Thanks* to our Gold and Silver Sponsors**

### **Gold Sponsors**

Ktchns Ltd — Bovingdon News & Post Office — The Bell  
Focus Rigging & Scaffolding — Dancing on Ice  
Bovingdon Village Stores — Zeera Indian Restaurant  
Gurney Construction — Meat Hook Butcher, Deli & Café  
The Old Bull Public House (Bull Buddies)

### **Silver Sponsors**

Emma Stevens Accountancy — Underwoods Solicitors  
Manor Heating (Plumbing) — R A Fyfe & Son — Co-Op Food  
Laurel Cottage Dental Practice — AAD Electrical Services  
Back Garden Chiropractic Clinic — Financial Resolutions  
Tesco Express — White Rose Funeral Directors — K's Café

***Help us light up the High Street this Christmas...***

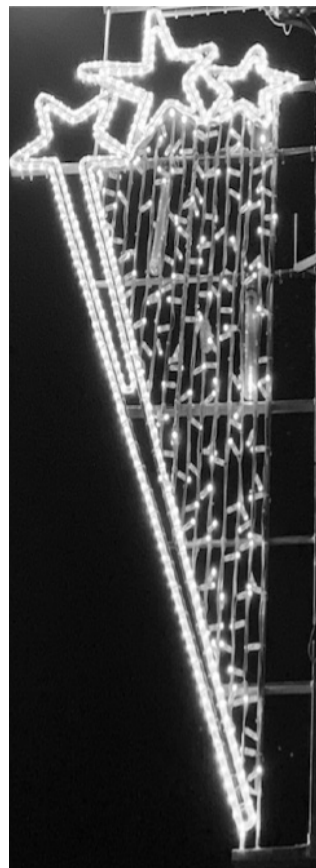
**[www.gofundme.com/christmas-lights-bovingdon](https://www.gofundme.com/christmas-lights-bovingdon)**

*All contributions greatly appreciated*

For further information,  
please contact the Parish Clerk's office on

**833036 / [office@bovingdonparishcouncil.gov.uk](mailto:office@bovingdonparishcouncil.gov.uk)**





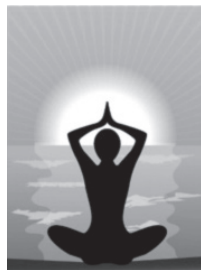
Bovingdon's 2020 Christmas Lights  
Switch-on takes place on

**Sunday 29<sup>th</sup> November**

**Unfortunately due to COVID-19 restrictions,  
there will be NO Switch-On Ceremony OR  
Christmas Street Faye this year**

## **Mind & Body — Yoga for all**

This long-established and friendly village group enjoys a class that combines a total body workout with the opportunity to relax and unwind. Combining controlled and focused movement with mindful stillness and gentle but powerful breathing techniques allows individuals to become stronger, improve suppleness, and feel calmer and more in control.



This Hatha yoga-based class with elements of relaxation helps:

- stretch out tight muscles in a gentle way
- release tension and increase flexibility
- align the spine to relieve aching backs and end fatigue
- build core and body strength to improve balance and posture
- reduce stress through conscious breathing
- enhance powers of concentration.

Open to all levels of ability. £7 per drop-in session. Please contact me if you would be interested in joining either the Monday or Wednesday evening classes..

*Jo Bain*

*834251 / jo@bain-family.org*

---

## **Bovingdon Evening WI**

What a strange year — quite unprecedented in our life-time. The WI have not had any meetings since Lockdown in March but we have been keeping in touch with one another using email, phone, WhatsApp and Zoom. I do feel very sorry for people not on email and without computer know-how.

**theWI**  
**INSPIRING WOMEN**

We have encouraged members to take photos of wildlife, plants, activities and new skills and submit them so we can compile a photo library of life in Lockdown; and recently we have introduced local walking Treasure Hunts and Quiz trails, which add interest to all those walks we are now doing.

To raise money for our charity, which this year is the Bovingdon Lunch Club, we have been collecting and re-selling second-hand paperbacks to our members and friends, and some members have been making and selling face masks... we have already raised £115 from the sale of books and face masks — every £1 adds up!

Now that Lockdown is lifting we are hoping to re-start our monthly meetings once the Baptist Church is available but in the meantime we are hoping to host some meetings on Zoom. We also hope to re-start our lunch trips and other outings where possible.

Roll on 2021!!

*Jenny Thirlwell, 831491*

*Shirley Hart, 380355*

# JARMAN AND SONS

TRADITIONAL HARDWARE & DIY

SPECIALIST NUTS / BOLTS / FIXINGS SUPPLIER

---

GRANULATED SALT

DISHWASHER AND WATER SOFTENER

PEBBLE & GRANULATED

DISCOUNTED BULK BUY: 25KG

**FREE LOCAL DELIVERY**



**PLUS:** PLANTS / WOOD / PET FOODS / PAINT / WALLPAPER  
LOOSE PARAFFIN / CALOR GAS / LIGHT BULBS

---

**OPEN MONDAY TO SATURDAY**

8AM TO 5:30PM

FIND US ON 

**44 HIGH STREET, BOVINGDON, HERTS**

**TELEPHONE: 01442 832141**

## **St Lawrence Churchyard**

The St Lawrence Churchyard spans over 4.5 acres between Church Lane and Church Street and is the largest open churchyard in Hertfordshire.



There are records of over 1,700 graves but there have been many more burials down the ages as there has been a church on the site since around the year 1200.

The churchyard is a living sanctuary for wildlife, unspoilt by agriculture and development and is maintained by an enthusiastic and dedicated team of volunteers who meet on the first Saturday of the month throughout the year.

Regular jobs are grass mowing, strimming, shrub trimming, pruning and removal of self-seeded ash, holly, elder and the ever-present brambles.

This year we were delayed starting work though did manage some winter debris removal before Lockdown on 23<sup>rd</sup> March. The team has been careful to remain socially distanced since reconvening mid-year but that's not difficult with 15 or so people working in all corners of 4.5 acres. We've even stopped for elevenses but keep plenty of distance between one another.

By late summer the team was on top of the long grass though I should point out the churchyard has three managed wild flower areas that are left untouched until August when one is cut, followed by another in September and the third in October, depending on what wild flowers species are spotted during their respective growing seasons. Nothing is cut until the flowers have resown their seeds.

This year's snow drops were prolific followed by a fine display of bluebells in late spring — especially so as there had been no early strimming and bluebells appeared all round the boundary walls and under the canopy of the large Austrian pines and boundary yews.

Ninety per cent of all waste is collected and sent a couple of times a year for composting. We only have one bonfire a year for non-compostable waste and this is timed to co-incide with Bonfire Night.

There are times of the year, especially at the height of the growing season, when a few mid-week volunteers could take some pressure off the Saturday team. A small number of volunteers do give time in the week. If you have time and would like to give a few hours a month, please let me know.

Thank you.

*Gary Cullum, Churchyard Officer*  
07768 774355 / [garyocullum@sky.com](mailto:garyocullum@sky.com)



## Pro-Shuttle

### Airport Transfers & Corporate Events

Pro-Shuttle provides a local, friendly, professional service, with CRB checked drivers operating 8-seat specialist vehicles, designed to accommodate:

- Airport Transfers ● Cruise Transfers
- Corporate Events ● Bespoke Services ● Ski Trips
- Weddings ● Special Events ● Golf Trips

Special Ski Package includes: Collection, Ski Service and Transfer to Airport

For more information on our wide range of services, obtain a quote, or book online, visit:

**[www.Pro-Shuttle.co.uk](http://www.Pro-Shuttle.co.uk)**

Telephone: 07769 112922 email: [info@pro-shuttle.co.uk](mailto:info@pro-shuttle.co.uk)

# A A PLUMBING SOLUTIONS

A Business Built on Reputation and Reliability

- Bathroom Installations and Refurbishments
- Showers Installed/Replaced
- Tap Repairs/Replaced
- Leaking Tanks/Cylinders
- Washing Machines Fitted
- Tiling
- Painting & Decorating
- Radiators Added, Moved and Replaced
- Burst Pipes
- Outdoor Taps Fitted
- Valves Fixed and Replaced
- Dishwashers Fitted
- Unvented Cylinders
- DIY jobs incl. flatpacks

**We are your established Bovingdon Plumber**

**OFFICE: 01442 831519 MOBILE: 07782 122555**

**[www.aaplumbingsolutions.co.uk](http://www.aaplumbingsolutions.co.uk)**

## **Neighbourhood Watch — Bovingdon Ward Update**



As at 16<sup>th</sup> September we have 1084 residents now registered in the Bovingdon area (which incorporates Box Lane, Bourne End, Felden, and surrounding areas), which is just over 45.6% coverage; the figures are slightly down on the same period last year, as several addresses have been removed from OWL where residents have moved from the area. If you have changed your address please let me know your contact details so the OWL system can be updated; this ensures you receive emails relating to the ward you live in. Please also advise if you are moving out of the area, so that your details can be removed from the system.

### **OWL — Police alerts for Communities and Watch Schemes**

Register for free to receive local, timely alerts regarding incidents, issues and events from your local policing team and partner agencies. If you do not have an email address you can still register on OWL and street co-ordinators will keep you updated on crimes in our area and current scams. To join OWL: register at [www.owl.co.uk](http://www.owl.co.uk) or drop your details in to the Parish Clerk's office, or if you would like to become involved with Neighbourhood Watch, then please call/email me.

### **REMEMBER, CRIME IS LOWER IN NEIGHBOURHOOD WATCH AREAS**

*Details will be kept securely in accordance with the Data Protection Act, will not be passed to third parties and will only be used to contact you for Police or Neighbourhood Watch matters.*

*Julie Steer, NW Ward Co-ordinator for Bovingdon, Chipperfield and Flaunden  
NW Deputy District Co-ordinator for Dacorum  
[nwatch\\_julie@btinternet.com](mailto:nwatch_julie@btinternet.com) / 07803 141254*

---

## **Hertfordshire Hearing Advisory Service**



**Hearing**  
Advisory Service

Mike Leon and Joe Beech are unable to offer the usual two monthly surgeries at Dudley House nor Hemel Hempstead Hospital for batteries, replacement domes and tubes, and unfortunately do not know when this will be possible.

We are therefore offering the following service: please phone Joe on 07934 595812 to make an appointment or leave a message. We are operating from home here in Bovingdon and full PPE will be worn and social distancing observed. We do require the NHS Brown Book.

Hertfordshire Hearing Advisory Service is a charitable organisation working alongside the NHS and offer a free service. Any donations to the charity would be greatly appreciated to promote the service.

*Mike Leon / Joe Beech, 07934 595812*

# G.C. PARISH & SONS

YOUR LOCAL FUEL MERCHANT

Solid Fuel for Collection or Delivery  
House Coal and Smokeless Coal  
Fuel for Stoves, Boilers and Multi-fuel Appliances  
Restaurant Charcoal and Briquettes  
Heating Oil, Paraffin, Kindling and Firelighters

**Tel: 01442 832224 or 01442 832341**

92 HIGH STREET, BOVINGDON

## MEAT HOOK



**Opening Hours**  
**Tuesday — Friday 8.30-5.30**  
**Saturday 8:30-3:30**

### BUTCHER | DELI

We are still doing free deliveries to the local area, please contact us with any enquiries.

Follow us on Facebook to find out more about any offers or promotions

we have going on: @bovingdonmeathook



**07570 538209**

**info@themeathook.co.uk | www.themeathook.co.uk**

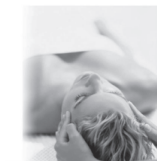


### Time2Relax Relaxing Beauty Treatments and Massage

Just 5 minutes from the High Street is a peaceful haven just waiting for you. This is your personal invitation to come and experience Time 2 Relax. Fully qualified Beauty and Massage Therapist gaining distinctions with City and Guilds and VTCT

Comprehensive range of beauty treatments:

- › Facials, Manicures, Pedicures, Waxing, Swedish, Hot Stone, Aromatherapy, Indian Head and Thai Foot Massages
- › Reflexology, Facial, Auricular, Fertility & Pregnancy, Reiki
- › Gift Vouchers available
- › Email [gill@time2relax.me.uk](mailto:gill@time2relax.me.uk) to book a treatment
- › Visit [www.time2relax.me.uk](http://www.time2relax.me.uk)



Salon at 5 The Hollies, Long Lane, HP3 0ND

Call 832459 for an appointment today



## **Bovingdon History Group**

Bovingdon  
History Group

Our meetings have been cancelled since Lockdown and can only re-start when it will be safe to do so. We are disappointed that we are very unlikely to be able to hold our annual dinner next January; this has been an annual fixture for over twenty years.



The May edition of the Bovingdon News was only published online so in case you missed the online version, the following notes (which were prepared for that edition) will bring readers up to date with our activities prior to Lockdown.

The talk last September was given by Adam Smith entitled *The Rothschild's Tring Park and Estate*. In the 1830s the Rothschild brothers were keen to follow the pursuits of the gentry and go hunting. At that time hunting was very popular in the Vale of Aylesbury and the opening of the railway to Tring gave easy access to the area from London. Initially the brothers had no interest in property and just wanted stabling for their hunting



horses. They rented stabling in Hastoe but found this impractical, with the steep slope down from Hastoe proving dangerous for the horses, particularly in bad weather. They then rented the stables in what is now Tring Park House. Later generations of the Rothschilds bought the house as a family home and carried out extensive building work, resulting in the building we have today. The Rothschilds have left a great legacy in Tring.

In October our speaker was Marion Hill, whose talk was entitled *Treasures of the Archives*. She gave us a comprehensive description of both the organisation and some of the contents of the Hertfordshire County archives. They cover all aspects of life in Hertfordshire from the Middle Ages to the present day and grow year by year.

In November our talk was given by Alison Eskriett. Her topic was *A Woman's Lot in the 18<sup>th</sup> Century*. Although in many respects women were second class citizens, this was before the Industrial Revolution and cottage industries gave opportunities for man and wife partnerships. Alison showed us a delightful slide of a man and wife at home, with the wife spinning yarn and her husband weaving it into cloth. The Industrial Revolution in the 19<sup>th</sup> century made life harder for working women in the grim wool and cotton mills.



In December Roy Woods entertained us again with his talk entitled *The Way We Were*. This was a further selection from his postcards of Hemel Hempstead, showing delightful semi-rural scenes around the town, from Bourne End to Leverstock Green, before the New Town was built.

# WAYin



## Has the current Coronavirus had an impact on your levels of stress and anxiety?

You are not alone, at Way In we offer counselling for young people and families, with specially trained therapists, all working online.

It's not easy to find someone to talk to about your feelings and anxieties. At Way In we are here to listen, and offer a safe space to talk about your worries or concerns.

We offer various price options to ensure our services are accessible to all. Please call or visit our website for further information.



Tel: 07307 199625

[www.way-in.uk](http://www.way-in.uk) | [wayinhertsandbucks@gmail.com](mailto:wayinhertsandbucks@gmail.com)

## **Bovingdon History Group** (cont'd)

We held our Annual Dinner in January this year. We had an excellent meal, provided by our caterer Julia Maddox. The dinner was again very successful, with about 60 people attending. Our after-dinner entertainment was provided by Tony Earle with a talk entitled *A Look at the Musicals*. He illustrated the talk with a series of short film clips, starting with silent films of 19<sup>th</sup> century music hall acts accompanied by phonograph recordings, moving forward to Ginger Rogers and Fred Astaire and other shows in the Twenties and Thirties, concluding with clips from *Oklahoma* and other more recent shows. We all sang along to the well-known numbers and enjoyed the show.



Our speaker in February was Elizabeth Walden. She is a member of the Green Guides in St Albans who organise tours of St Albans and also give talks to local societies. Her topic was *St Albans, A Thousand Years of History* — quite a challenge to cover in an hour. She started in the pre-Roman era then illustrated the main features of Verulamium before moving on to the history of the Abbey and Monastery, and the growth of the town on the hill. It was fascinating to see how the town plan has scarcely changed from then to the present day, through mediaeval growth to the coaching trade and the coming of the railway in more recent times. A most entertaining and professional lecture.

We always welcome new members at our meetings and you will be assured of friendly company and a stimulating evening. The meetings are advertised in the library and locally. Please see the Village Diary for details of our forthcoming programme, and there is also a copy of the programme on the notice board in the library and on the Memorial Hall noticeboard.

*Sylvia McClelland, Secretary, [pandsmcc@mcclell.plus.com](mailto:pandsmcc@mcclell.plus.com)*

## **Hatch, Match & Dispatch**

### **Baptisms**

*No baptisms*

### **Marriages**

Daniel C & Emma L

### **Deaths**

Elizabeth P.  
Elizabeth W.  
Margaret T.  
Peggy G.  
Martin B.  
David P.  
Trevor H.  
Colin D.  
Lily B.  
Florence G.





# BOVINGDON

## *pre-school*

morning  
sessions

close links  
with  
local  
primary

monday  
to  
friday

breakfast  
club  
from  
7.45am

SENCO  
&  
safe  
-guarding

### key person per child

**30 free hours for eligible working parents**

**3 & 4-year olds' - 15 free hours entitlement offered**

**2-year-old Free Places Scheme for eligible 2-year olds**

### School Links

Bovingdon Pre-School, located in the heart of the village community, is a well-established centre of learning. On the doorstep of Bovingdon Primary Academy, close links have been forged between the two settings allowing a smooth transition from one to the other when the time comes. The children share in various annual celebrations with the Foundation Stage children and often preview many of their performances.

### Staffing

The Pre-School work on the Ofsted ratio of 1 adult to every 4 children under the age of 2 years and 1 adult to every 8 children over the age of 3 years. Our staff have many years of experience between them and provide a friendly and supportive environment for learning.

**Qualifications range from NVQ Level's 3 and 2 in Children's Care Learning and Development. We have a Dedicated Safeguarding person and a SENCO.**

**All contracted staff regularly attend the core care courses required for Early Years Practitioners including Paediatric First Aid**

and Safeguarding Children, combined with various other training courses to enhance their continued professional development.

### Parental Involvement and Partners

Parents are invited to play a part in Pre-School life in a variety of ways - helping during a session, sharing stories with groups of children or even cutting out shapes at home.

The Pre-School is run and overseen by a voluntary committee enabling parents to maintain its core values and exceptional standard of care for the children first and foremost.

### Sessions

Pre-School sessions are designed to be fun and educational with plenty of opportunities for free play as well as adult led activities in small groups.

The sessions are planned to help children with their all-round development and, due to our large sheltered area in the garden, the children are offered outdoor play time whatever the weather!

## **Bovingdon Primary Academy**



The Academy continues to provide a high quality education and learning environment for over 430 pupils from the surrounding area. Despite the many challenges and changes the school has faced during the ongoing epidemic, our standards and priorities have remained the same. The sky is the limit for our pupils with our core values of belonging, possibilities and achievement at the heart of everything we do. Over the past few months, the pupils have shown their perseverance, resilience and creativity: they brightened up the village with rainbows, and scooted through the streets to raise money for SUDCUK during Lockdown. They took to distance learning with incredible ease and then have returned to school with great care and enthusiasm.

In July, the school had a special visit from the Prime Minister, Boris Johnson. Accompanied by a number of reporters, Mr Johnson came to school to speak with teachers and pupils about the challenges, solutions and opportunities facing schools in the current climate. We were proud to be held up as an example of how to adapt and persevere in an ever changing and uncertain situation, and to showcase the incredible attitude of our pupils, staff and the surrounding community.

The year ahead looks very different to previous years. There has been limited opportunity to fundraise, as our community fayres and events have been unable to go ahead, and the children will be unable to take part in off-site visits in the same way. However, inside the school we are finding new ways to hold events, create new opportunities, fundraise and inspire learning. As a school we place high value on physical education and encourage all pupils to maintain a healthy and active lifestyle. In line with this we continue to maintain our links with many external sports clubs both in the village and beyond.



We began the academic year by appointing various school councillors. Our groups and councils are made up of pupils from Year 1-6 and have input in to all areas of school life from learning to eco initiatives, from fundraising to sports and from playground activities to speeches and classroom helpers. In September, the school celebrated European Languages Day. Pupils and staff dressed in the colours of European flags, practised new phrases and learnt about different cultures. We are in the process of planning events for the year ahead and we are speaking with the pupil councils to help create a positive school experience for the whole community. Our aim is to build an environment where children have confidence in themselves, respect and encourage one another and understand the impact they have on their own education and wider community.



We are very proud of our pupils and we are really excited for the year ahead. We are currently unable to run tours of the school but if you would like to know more about us, please visit the school website or contact the office.

# Reflections

Health &  
Beauty Clinic

01442 834236

**Judith Stickland** M.B.A.B.T.A.C. M.I.F.A. I.P.T.I

*Beauty Therapist & Aromatherapist*

*Electrolysis, Facials, Waxing Hydrotherapy, Manicure, Pedicure,  
Body Treatments, Waxing, Aromatherapy etc.*

*Free Consultation and Advice available.*



## Computer Help and Tuition that comes to YOU!

Friendly help to build your  
confidence with your PC, iPhone or iPad,  
and support on technical issues

**Tel: 01442 388537**  
**Email: karen@reeboot.co.uk**  
**Web: www.reeboot.co.uk**

REEBOOT



"Bovingdon's Mobile Hairdresser"

A personal mobile hairdressing service in the comfort of your own home.

I am a qualified hairdresser specialising in:

- cutting
- blowdry
- perms
- highlights
- colour
- tints
- colour bath
- children's haircuts

Please call to make an appointment.

07885 491988







# WHITE ROSE

---

## INDEPENDENT FUNERAL DIRECTORS

ORGANISING THE FUNERAL OF A LOVED ONE REQUIRES TIME,  
PATIENCE AND THE SYMPATHETIC ASSISTANCE OF  
AN EXPERIENCED FUNERAL DIRECTOR.

White Rose Independent Funeral Directors was established to offer caring, personal, flexible and affordable funeral services, with the necessary knowledge and experience to help and guide you every step of the way.

We are proud to offer a truly personalised experience,  
the wishes of our families are our main priority and  
we pride ourselves in offering all services to meet individual needs.

Our aim is to make such a stressful time, a little easier  
with our dedication and personal guidance we provide.  
We would consider it an honour to support your family through  
this difficult time by providing a warm and caring service.

90 HIGH STREET, BOVINGDON, HERTFORDSHIRE HP3 0HJ

TELEPHONE: 01442 953145

EMAIL: [INFO@WRFUNERALS.CO.UK](mailto:INFO@WRFUNERALS.CO.UK)

WEBSITE: [WWW.WRFUNERALS.CO.UK](http://WWW.WRFUNERALS.CO.UK)